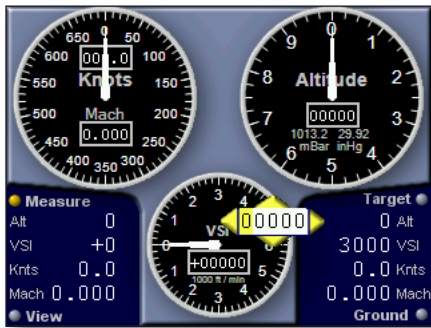


DPST-9200A Quick Start Guide



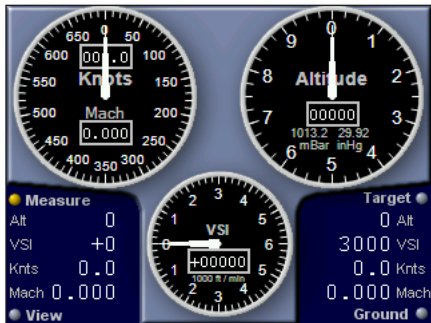
✓ Make sure all hoses are disconnected before turning unit on. **FIRST** turn test box on. Second turn handheld on. Turning test box off will also turn handheld off.



Measure / Control Screen:
Press ALT, VSI, A/S and MACH buttons on keypad to enter Target values for Altitude, Vertical Speed and Airspeed.

Use either the keypad numbers or the yellow “Increase” and “Decrease” buttons to enter the needed value. *Note: the yellow buttons are the only way to enter a negative value.

⚠ Caution - Do not exceed aircraft limits or manufacturer equipment maximum limitations.



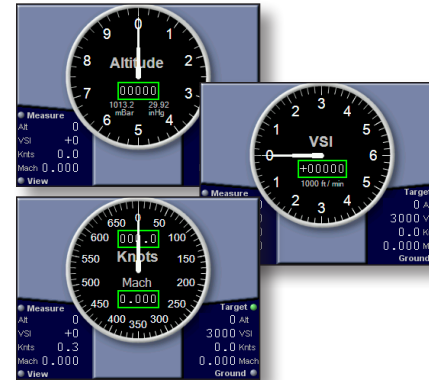
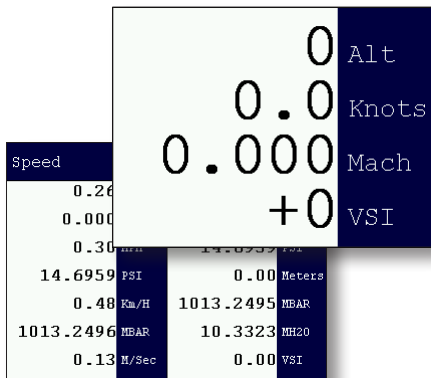
Main Control Screen:
Green “Start” button begins test. Red “Stop” button commands all control and automation functions to Read Only mode.

⚠ Caution on Leak Rate

Numerical Read-Out Screens:
Tap “Measure” box on bottom left of the touch screen to display large numerical read-out.

Tap large numerical screen to display both units of measure for the Airspeed (PS) and Altitude (PT) changes.

The third tap to the touch screen returns to the Main Control screen.



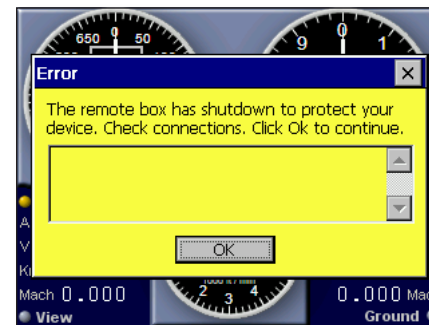
Large Dial Screens:
To enlarge each measurement (Altitude, Knots or VSI) tap the appropriate dial on the touch screen.

Once the measurement read-out is enlarged, tap the screen again to return to the Main Control screen.



The “Safe At Ground” screen will appear after pressing the “Go To Ground” button on the bottom right of the keypad. Once the aircraft has safely made it back to the ground.

It is then safe to disconnect the static and pitot hoses.



A yellow “Error” screen will appear any time an error occurs. The remote box will shut down to protect the device and the aircraft. Check all connections, then click OK to continue.



The blue “Tool Menu” button on the bottom left of the keypad allows the user to alter the measurements on the dials, as well as other options and limitations. (Highlight Box) (Limitations Password: 753951)